

**23/P/02045 - Mandolay Hotel,
36-40 London Road,
Guildford,
GU1 2AF**

[Previous](#)

[Next](#)

[Home](#)



Site Location Plan

[Previous](#)

[Next](#)

[Home](#)

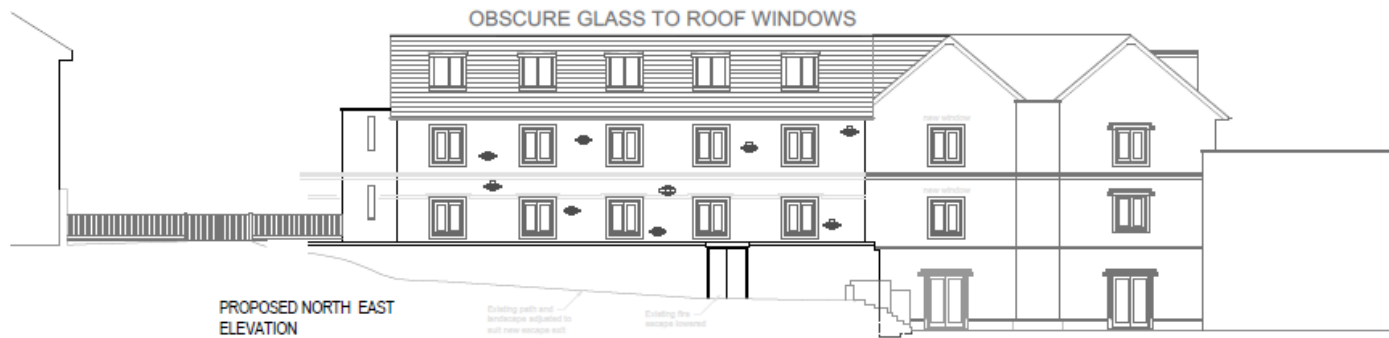
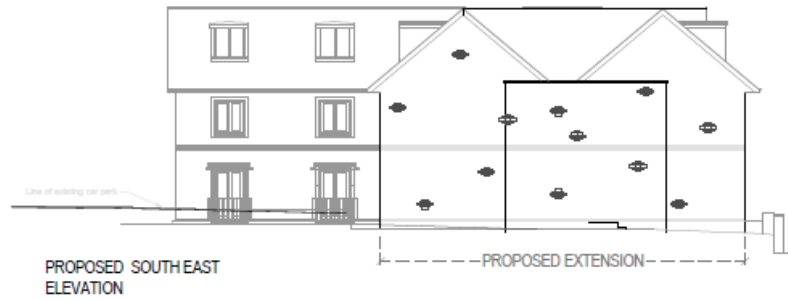


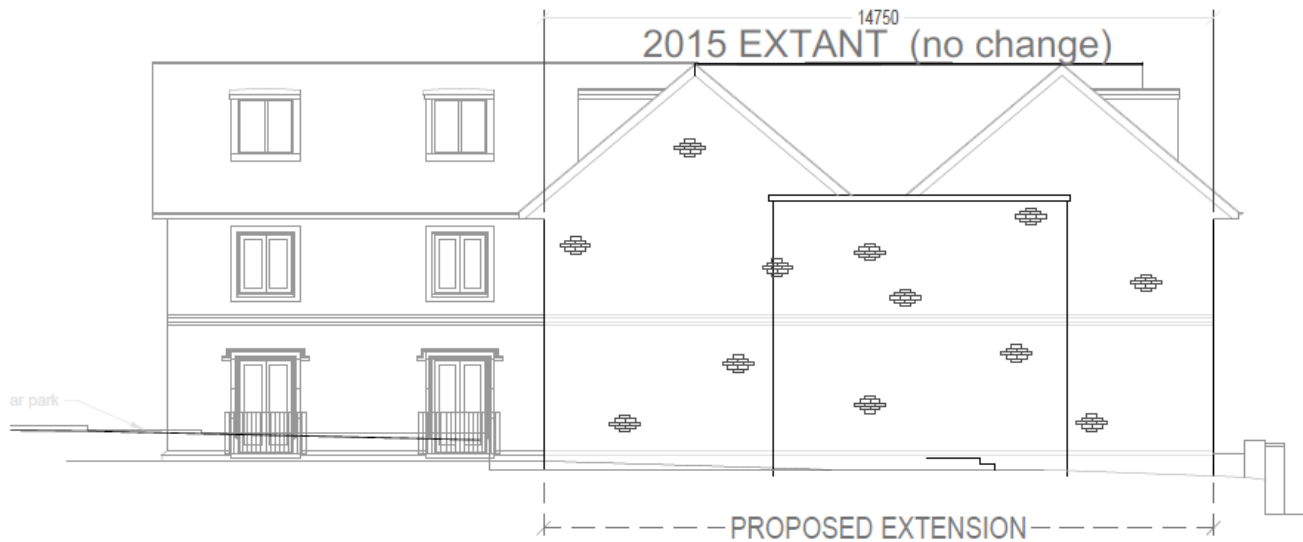
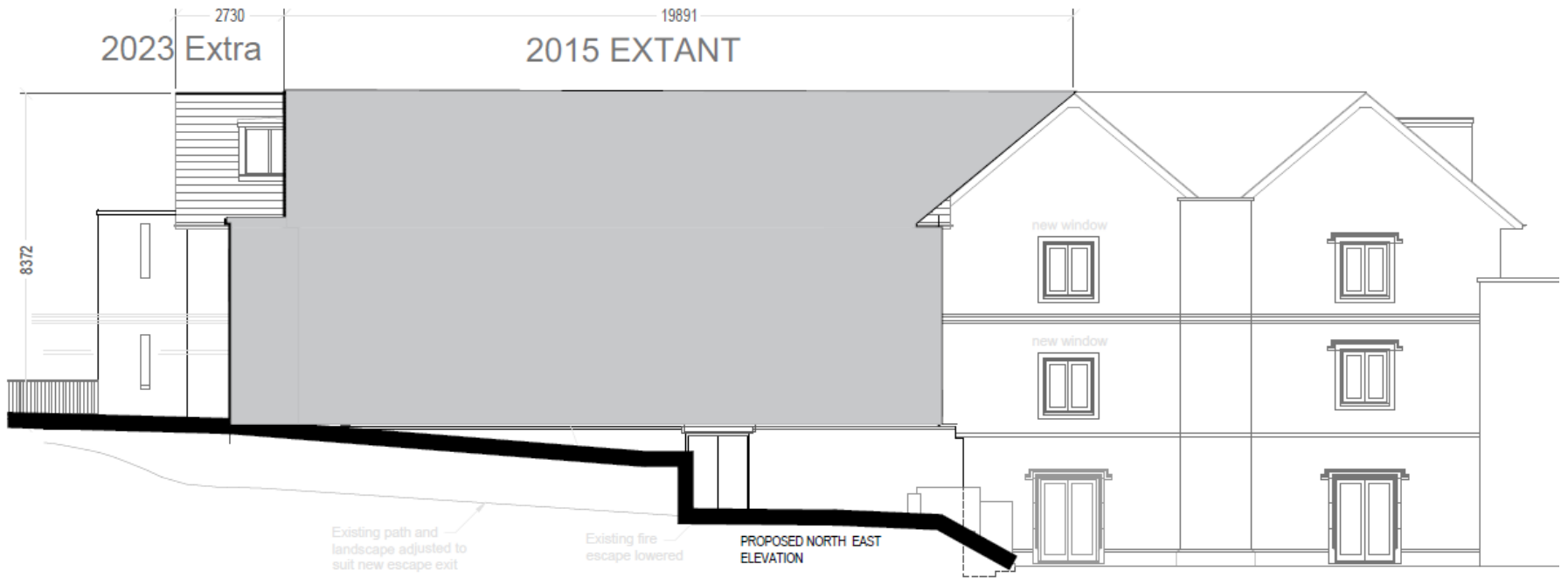
Block Plan

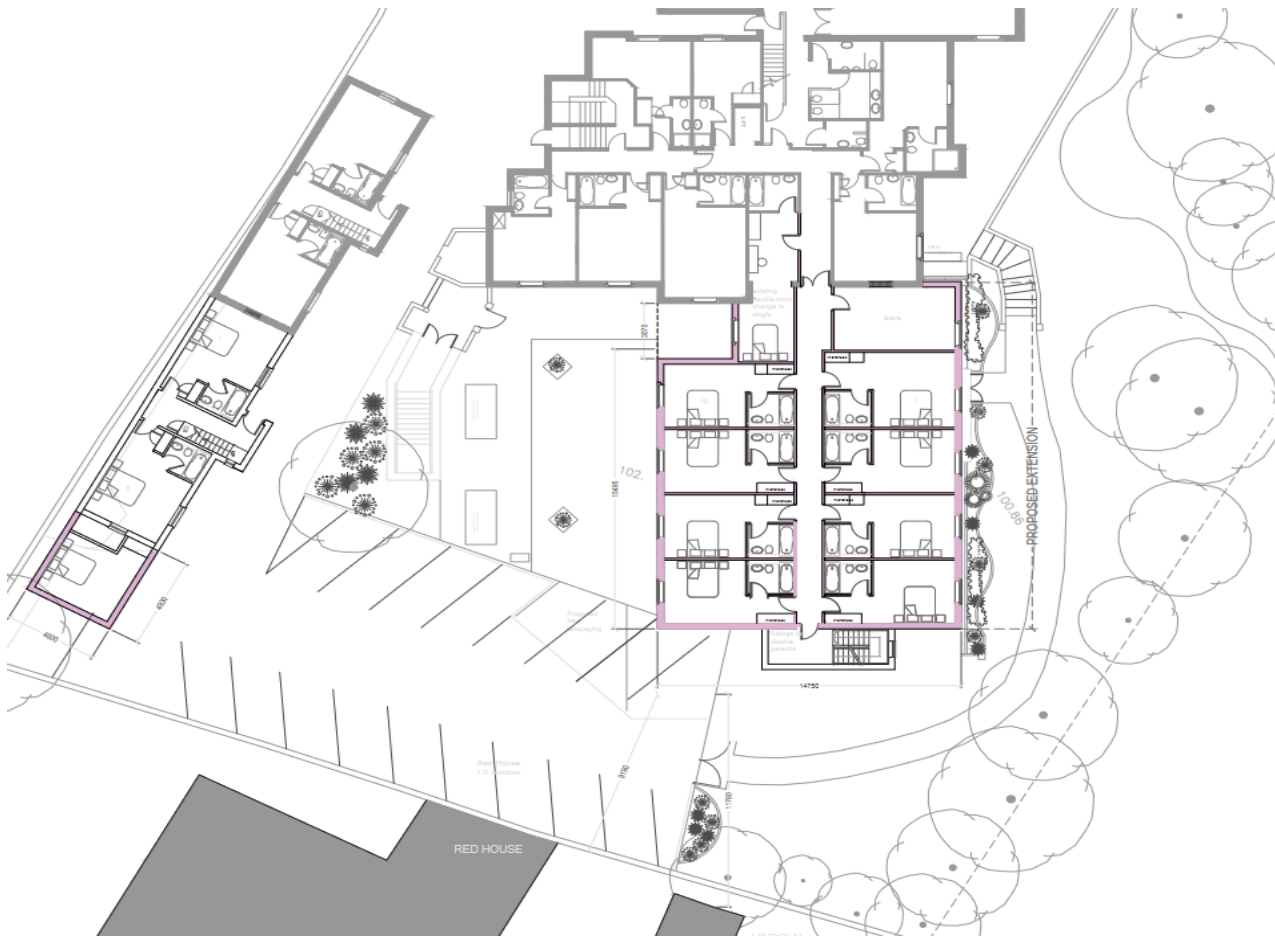
[Previous](#)

[Next](#)

[Home](#)





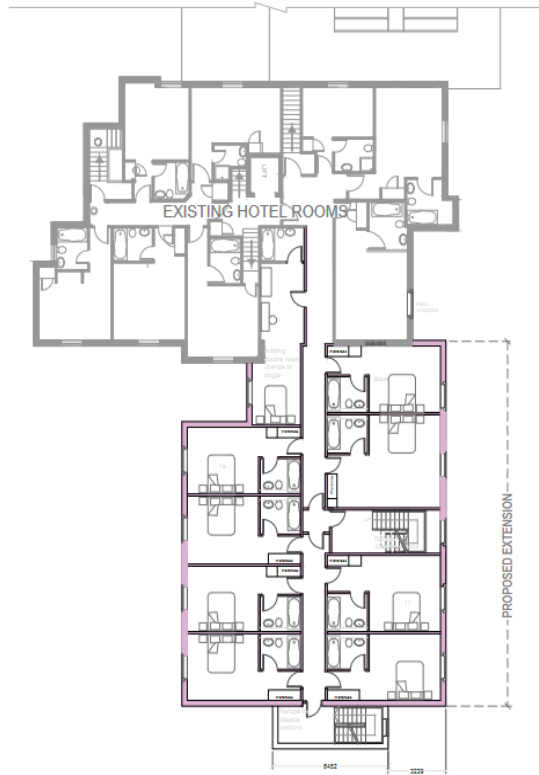


Proposed Ground Floor Plan of Hotel and Coach House

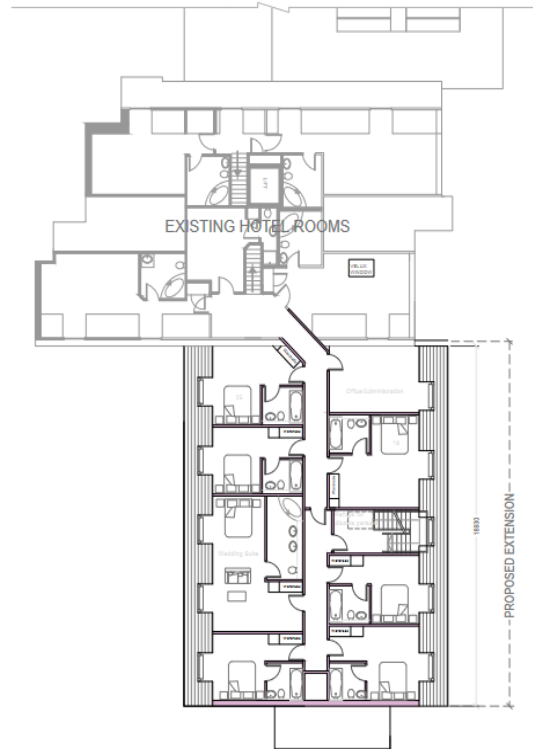
[Previous](#)

[Next](#)

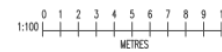
[Home](#)



PROPOSED FIRST FLOOR PLAN



PROPOSED SECOND FLOOR PLAN

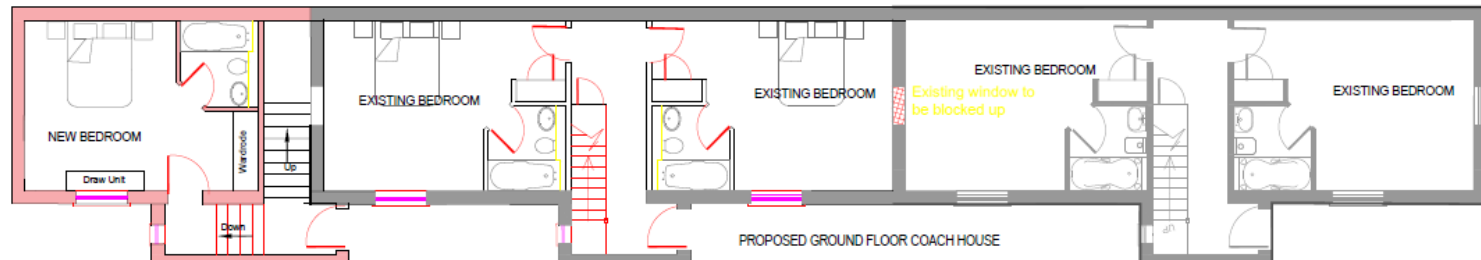
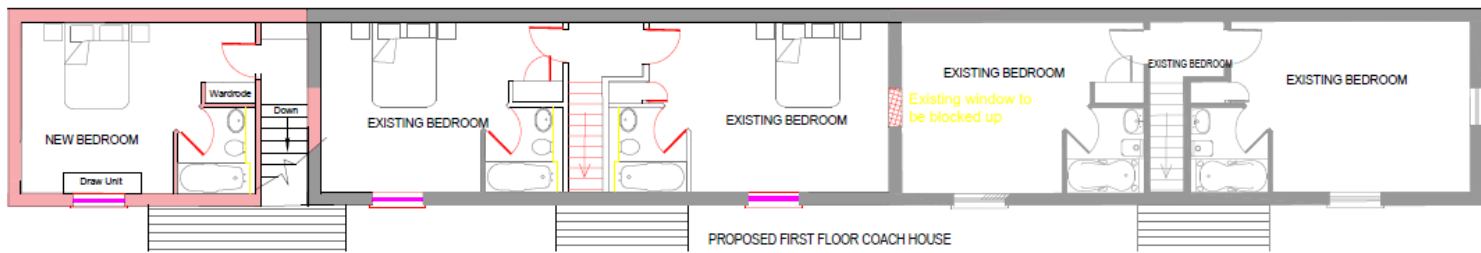
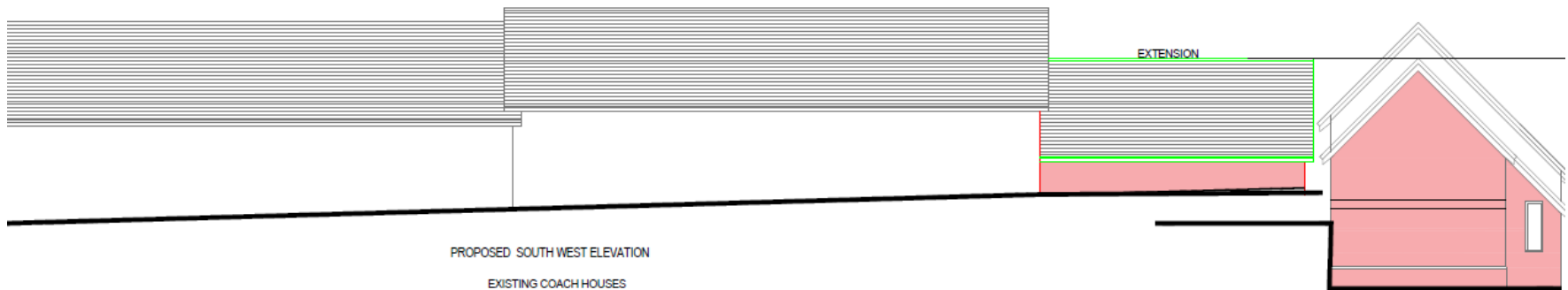


Proposed First and Second Floor Plans to Hotel

[Previous](#)

[Next](#)

[Home](#)



Proposed elevations and floor plans to Coach House

[Previous](#)

[Next](#)

[Home](#)



View of the rear of the Hotel

Previous

Next

Home



View of the rear of the Coach House

[Previous](#)

[Next](#)

[Home](#)



Screening along the boundary to Waterden Road adjacent to existing Hotel

[Previous](#)

[Next](#)

[Home](#)



View across site to rear of dwellings in Waterden Road from Car Park adjacent to Coach House

[Previous](#)

[Next](#)

[Home](#)



View of Lincoln House and Red House from the Car Park

Previous

Next

Home



View of Red House from the Hotel Car Park

[Previous](#)

[Next](#)

[Home](#)



Access viewed from rear of site between the Hotel and the Coach House

[Previous](#)

[Next](#)

[Home](#)



View of Mandolay Hotel from London Road

[Previous](#)

[Next](#)

[Home](#)



View of Mandolay Hotel looking towards Epsom Road

[Previous](#)

[Next](#)

[Home](#)



View of Mandolay Hotel from London Road looking towards Waterden Road

[Previous](#)

[Next](#)

[Home](#)



Block Plan

[Previous](#)

[Next](#)

[Home](#)